

Liber Knee Joint



Features

Waterproof for all situations

Sizes available for the **smallest to largest** patients

Available with **long or short uprights**

Additional functions with the
Extensor-N oder **Extensor-S** add-ons

+ Maximum **extension 5°** and **flexion 140°**

+ **Posterior offset** proportionally adjusted to joint size

+ **Noise dampener** with self-locking
setscrew for higher patient acceptance

Fabricated from **high-strength titanium**

Standard

Fully assembled as one item for clear cost estimates
and uncomplicated ordering

Machined uprights and offset connection ensure
optimal transfer of force

Upper section **CNC-machined from one piece**
of material for increased stability

Precise assembly calibrated to 1/100mm with self-
lubricating washers for smooth operation free of play

Maintenance-free stainless steel joint assembly
with bronze bushing

Unrivalled **20-month guarantee**

Engraved **serial number** for traceability

Clearly illustrated instructions for use

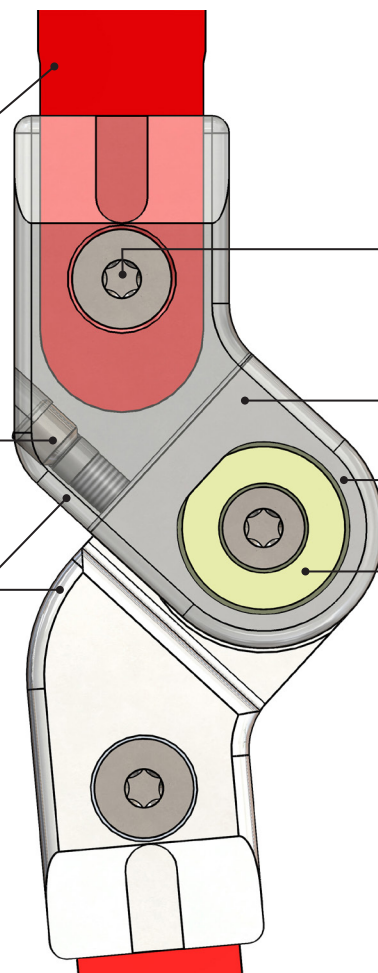
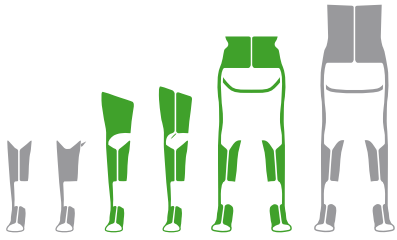
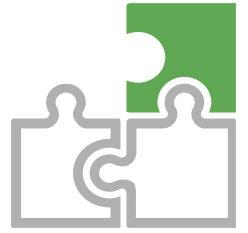


Fig. left

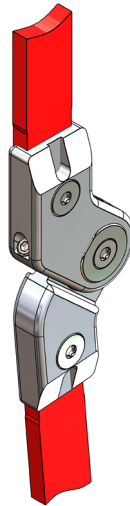


We recommend using our configurator to make your selection.
The configurator considers, among other factors, weight to height ratios.



Weight Classification (body weight)

Article No.	KAFO	HKAFO
Liber-22	up to 15 kg	up to 15 kg
Liber-25-Plus	up to 30 kg	up to 25 kg
Liber-28	up to 40 kg	up to 35 kg
Liber-30	up to 50 kg	up to 45 kg
Liber-30-Plus	up to 70 kg	up to 60 kg
Liber-34	up to 110 kg	up to 85 kg
Liber-34-Plus	up to 140 kg	up to 110 kg



Joint

Length	Width	Thickness	Weight	Posterior Offset
73 mm	22 mm	12 mm	38 g	12,5 mm
93 mm	25 mm	12 mm	76 g	15,5 mm
103 mm	28 mm	14 mm	111 g	16,5 mm
112 mm	30 mm	16 mm	143 g	17,5 mm
112 mm	30 mm	16 mm	143 g	17,5 mm
123 mm	34 mm	19 mm	210 g	22,0 mm
123 mm	34 mm	24 mm	270 g	22,0 mm

Locked	Extension 5°	Flexion 140°	Posterior Offset	Modular	Force Options	No Grinding Necessary	Noise Dampening	Water Resistant H ₂ O
--------	-----------------	-----------------	------------------	---------	---------------	-----------------------	-----------------	-------------------------------------